



# F1960 COUPLING SUBMITTAL DATA

Job Name: \_\_\_\_\_  
 Location: \_\_\_\_\_  
 Engineer: \_\_\_\_\_  
 Contractor: \_\_\_\_\_  
 Sales Rep.: \_\_\_\_\_

Submitted by: \_\_\_\_\_ Date: \_\_\_\_\_  
 Approved by: \_\_\_\_\_ Date: \_\_\_\_\_  
 Order No.: \_\_\_\_\_ Date: \_\_\_\_\_  
 Notes: \_\_\_\_\_

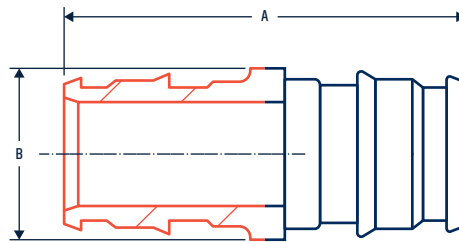
#CPLG-050    Quantity: \_\_\_\_\_     #CPLG-075    Quantity: \_\_\_\_\_     #CPLG-100    Quantity: \_\_\_\_\_  
 #CPLG-125    Quantity: \_\_\_\_\_     #CPLG-150    Quantity: \_\_\_\_\_     #CPLG-200    Quantity: \_\_\_\_\_

## DESCRIPTION

Calefactio's PPSU couplings made of PPSU (polyphenylsulfone) are known for their durability, resistance to chemicals, and high-temperature tolerance, making them a reliable and cost-effective choice for various plumbing applications.

## PRODUCT INFORMATION AND APPLICATION USE

F1960 PPSU fittings approved for sanitary installation's, and surface heating/cooling applications.



**Standards**

- ASTM F1960
- NSF/ANSI 14  
NSF/ANSI/CAN 61  
NSF/ANSI 372
- CAN/CSA B137.5

## TECHNICAL SPECIFICATIONS

- Material: PPSU (polyphenylsulfone)
- Max. Temperature (no pressure): 200°F (93°C) at 80 psi
- Max. Working temperature at pressure: 73°F (23°C) at 160 psi

Model#	Connection	A		B		Weight		Masterpack
		in	mm	in	mm	lb	kg	
CPLG-050	PEX ½"	1.54	39	0.67	17	0.01	0.006	25
CPLG-075	PEX ¾"	2.01	51	0.94	24	0.02	0.009	25
CPLG-100	PEX 1"	2.48	63	1.18	30	0.03	0.014	10
CPLG-125	PEX 1¼"	3.03	77	1.52	38.5	0.06	0.027	10
CPLG-150	PEX 1½"	3.50	89	1.69	43	0.08	0.036	10
CPLG-200	PEX 2"	4.45	113	2.36	60	0.23	0.105	5

## TYPICAL SPECIFICATIONS

Furnish and install, as shown on the plan.

Quebec, Canada  
**T** (450) 951-0818  
**F** (450) 951-2165

**CALEFACTIO RADIANT.COM**