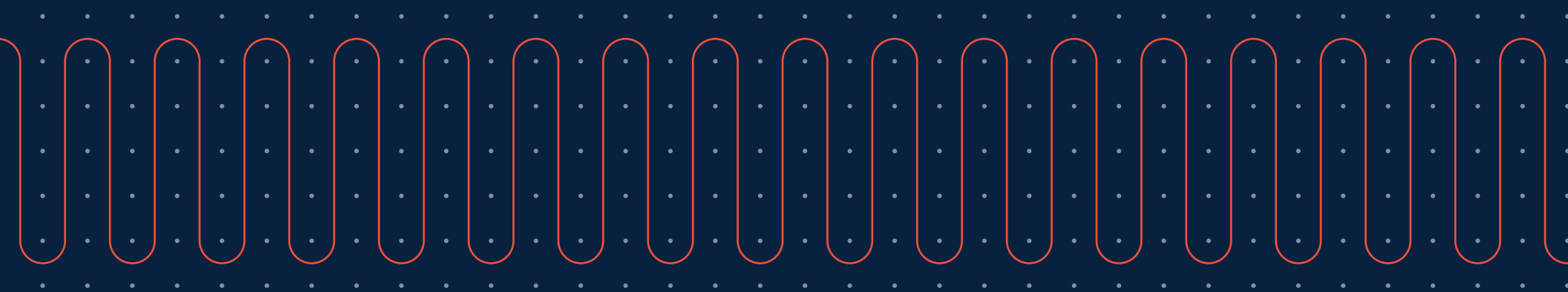




**PRODUCT CATALOG**  
Residential • Commercial  
**2025**





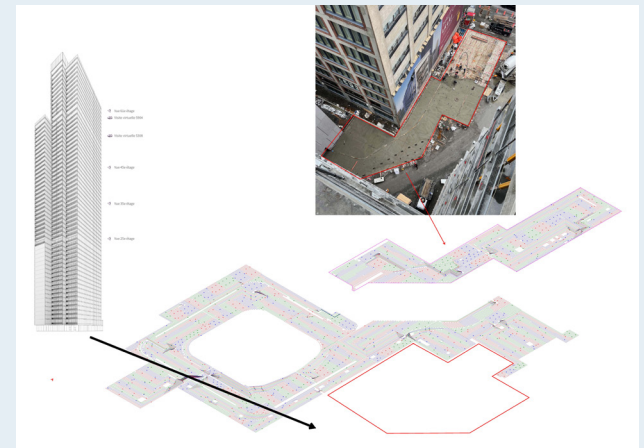
## A complete Radiant Heating System Design Service

Whether it's radiant floors or snow melting systems using various heat sources, our turnkey services include a customized recirculation plan, the complete design of your mechanical room, and a detailed list of necessary equipment, such as the boiler, pumps, and control systems.

With over 25 years of experience in hydronic heating, Calefactio offers fast and tailored solutions for residential and commercial projects across Canada. Our team of experts supports you at every step to ensure the efficient and successful completion of your project.

### ADVANTAGES

- Customized looping plan tailored to your needs.
- Mechanical room design, complete with a detailed product list.
- Support from a team of experts, available at all times.
- Save time and money with our turnkey service.
- Solutions proudly developed in Canada by local experts.





PEX-A TUBING

# Calpex-R

Calefactio reticulated polyethylene tubing (PEX-a) are built with an anti-oxygen barrier that limits oxygen diffusion in the system to protect its components

CALPEX-R tubing is extremely flexible and durable, so you can create tight crimping angles by simply applying minimal pressure.

## ROLL LENGTH

New

Model#	Description	Weight	
		lb	kg
CALPEX-R-12-300A	PEX-a ½" 300 ft	18	8.1
CALPEX-R-12-500A	PEX-a ½" 500 ft	30	13.4
CALPEX-R-12-1000A	PEX-a ½" 1000 ft	59	26.8
CALPEX-R-58-300A	PEX-a ⅝" 300 ft	14.5	10.9
CALPEX-R-58-400A	PEX-a ⅝" 400 ft	32	14.5
CALPEX-R-58-500A	PEX-a ⅝" 500 ft	40	18.1
CALPEX-R-58-1000A	PEX-a ⅝" 1000 ft	80	36.3
CALPEX-R-34-100A	PEX-a ¾" 100 ft	11	5
CALPEX-R-34-300A	PEX-a ¾" 300 ft	35	15.9
CALPEX-R-34-400A	PEX-a ¾" 400 ft	44	20
CALPEX-R-34-500A	PEX-a ¾" 500 ft	55	25
CALPEX-R-34-1000A	PEX-a ¾" 1000 ft	110	50
CALPEX-R-1-100A	PEX-a 1" 100 ft	17.9	8.1
CALPEX-R-114-100A	PEX-a 1 ¼" 100 ft	25.3	11.5
CALPEX-R-112-100A	PEX-a 1 ½" 100 ft	35	15.9
CALPEX-R-2-100A	PEX-a 2" 100 ft	60	27.2

## STRAIGHT LENGTH

Model #	Description	Weight	
		lb	kg
CALPEX-R-1-20AS	PEX-a 1" 20 ft	3.5	1.59
CALPEX-R-114-20AS	PEX-a 1 ¼" 20 ft	5.25	2.38
CALPEX-R-112-20AS	PEX-a 1 ½" 20 ft	7.3	3.3
CALPEX-R-2-20AS	PEX-a 2" 20 ft	11.9	5.4

## COMPLETE THE CALPEX-R WITH

**Tube uncoiler**  
See details on page 11.



New

**Floor heating strip**  
See details on page 11.



New

### Standards

- ASTM F876
- ASTM F2023
- ASTM F877
- CSA B137.5
- ULC S102.2
- ASTM E84
- DIN 4726
- PEX5106
- NSF14/61

### Listing

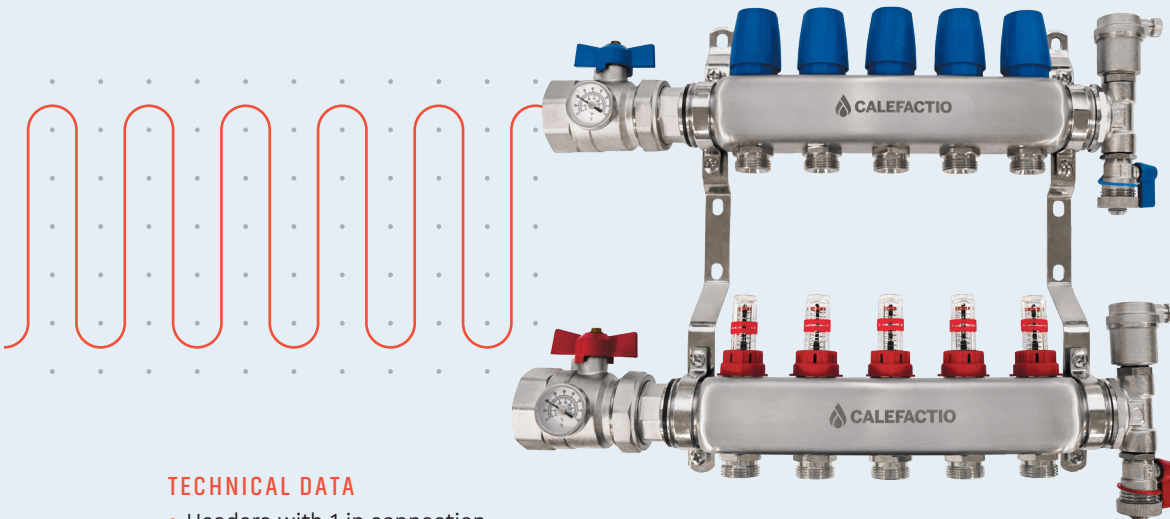
- cNSFus-rfh
- CSA
- ICC-ES
- Intertek

MANIFOLD

# Caltherm Pro

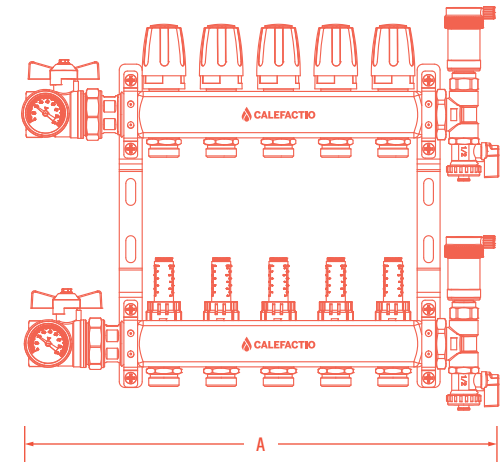
Our stainless steel manifold kit comes with 1 in connection. Headers are offered in 14 models (2 to 15 loops) with a maximum flow rate of 22.5 gallons per minute (GPM).

The integrated flowmeters allow the user to adjust the flow easily in each loop. Circuit isolation valves are also compatible with 24V actuators from Calefactio (#AC24VNC).



## TECHNICAL DATA

- Headers with 1 in connection
- Made of 304 stainless steel
- Pre-assembled on wall support for easy installation
- Integrated flowmeters (5 LPM / 1.5 GPM per loop)
- Maximum pressure: 125 PSI / 862 kPa
- Maximum temperature: 230°F / 110°C
- Provided with air purger and drain
- Possibility to isolate each loop with isolating valve and balancing valve
- 2-way NPT ball valve with integrated thermometer
- Compatible with ethylene and propylene glycol up to a maximum of 50% concentration



## 1 in Connection

Model#	Loops	Maximum Flow		Length (A)		Weight	
		LPM	GPM	in	mm	lb	kg
MAN2-SS100	2	10	3	10.8	274	7.3	3.3
MAN3-SS100	3	15	4.5	12.8	324	8.3	3.7
MAN4-SS100	4	20	6	14.7	374	9.2	4.2
MAN5-SS100	5	25	7.5	16.7	424	10.1	4.6
MAN6-SS100	6	30	9	18.7	474	11.1	5.0
MAN7-SS100	7	35	10.5	20.6	524	12.0	5.5
MAN8-SS100	8	40	12	22.6	574	13.0	5.9
MAN9-SS100	9	45	13.5	24.6	624	14.0	6.3
MAN10-SS100	10	50	15	26.6	674	14.9	6.7
MAN11-SS100	11	55	16.5	28.5	724	15.8	7.2
MAN12-SS100	12	60	18	30.5	774	16.8	7.6
MAN13-SS100	13	65	19.5	32.5	824	17.8	8.1
MAN14-SS100	14	70	21	34.4	874	18.7	8.5
MAN15-SS100	15	75	22.5	36.4	924	19.7	8.9

New

New

New

## COMPLETE THE CALTHERM PRO WITH

**Electrothermic actuator 24V from Calefactio**

See details on page 12.



**Manifold air pressure test kit**

See details on page 12.

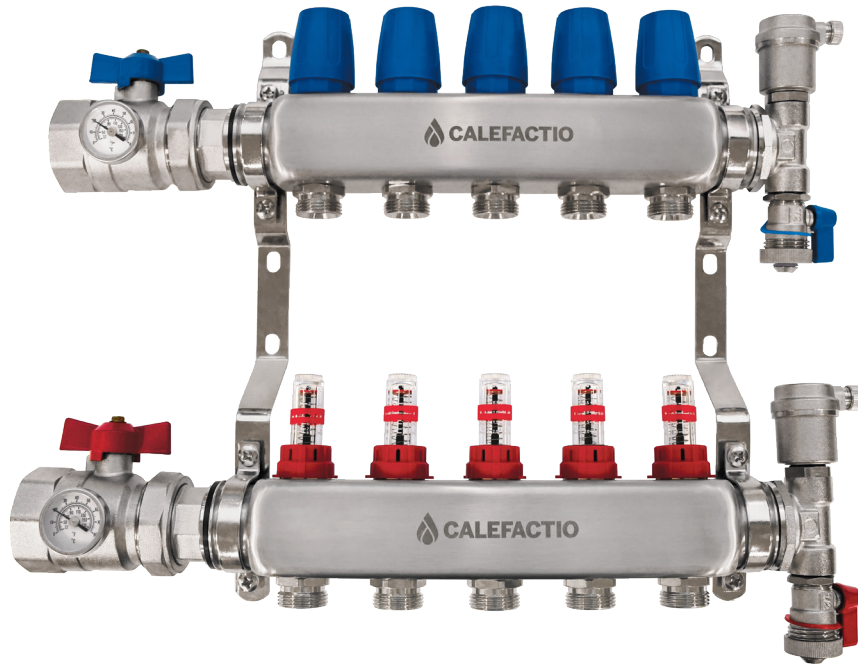


MANIFOLD

# Caltherm Mega

Our stainless steel manifold kit comes with 1 ½” connection but it is also available in 1 ¼” connection.

Headers are offered in 14 models (2 to 15 loops) with a maximum flow rate of 30 gallons per minute (GPM). The integrated flowmeters allow the user to adjust the flow easily in each loop. Circuit isolation valves are also compatible with 24V actuators from Calefactio (#AC24VNC).



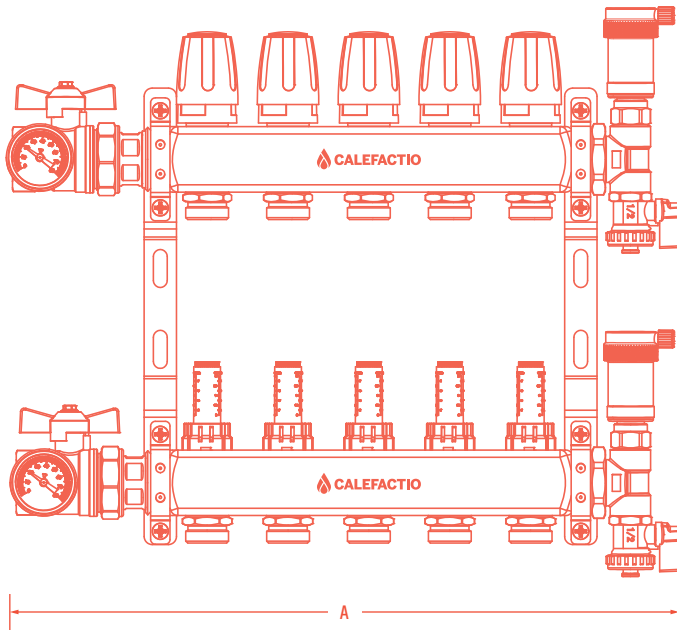
1 ½ in Connection\*

Model#	Loops	Maximum Flow		Length (A)		Weight	
		LPM	GPM	in	mm	lb	kg
MAN2-M150SS-BV150	2	15.8	4	11.2	285	8.8	4.0
<b>New</b> MAN3-M150SS-BV150	3	23.7	6	13.2	335	9.9	4.5
<b>New</b> MAN4-M150SS-BV150	4	31.6	8	15.2	385	11.0	5.0
MAN5-M150SS-BV150	5	39.5	10	17.1	435	12.0	5.5
MAN6-M150SS-BV150	6	47.4	12	19.1	485	13.1	6.0
MAN7-M150SS-BV150	7	55.3	14	21.1	535	14.2	6.4
MAN8-M150SS-BV150	8	63.2	16	23.0	585	15.3	6.9
MAN9-M150SS-BV150	9	71.1	18	25.0	635	16.3	7.4
MAN10-M150SS-BV150	10	79	20	27.0	685	17.4	7.9
MAN11-M150SS-BV150	11	86.9	22	29.0	735	18.5	8.4
MAN12-M150SS-BV150	12	94.8	24	30.9	785	19.5	8.9
<b>New</b> MAN13-M150SS-BV150	13	102.7	26	32.9	835	20.5	9.3
<b>New</b> MAN14-M150SS-BV150	14	110.6	28	34.9	885	21.6	9.8
<b>New</b> MAN15-M150SS-BV150	15	118.5	30	37	935	22.6	10.2

1 ¼ in Connection\*

Model#	Loops	Maximum Flow		Length (A)		Weight	
		LPM	GPM	in	mm	lb	kg
MAN2-M150SS-BV125	2	15.8	4	11.2	285	8.8	4.0
<b>New</b> MAN3-M150SS-BV125	3	23.7	6	13.2	335	9.9	4.5
<b>New</b> MAN4-M150SS-BV125	4	31.6	8	15.2	385	11.0	5.0
MAN5-M150SS-BV125	5	39.5	10	17.1	435	12.0	5.5
MAN6-M150SS-BV125	6	47.4	12	19.1	485	13.1	6.0
MAN7-M150SS-BV125	7	55.3	14	21.1	535	14.2	6.4
MAN8-M150SS-BV125	8	63.2	16	23.0	585	15.3	6.9
MAN9-M150SS-BV125	9	71.1	18	25.0	635	16.3	7.4
MAN10-M150SS-BV125	10	79	20	27.0	685	17.4	7.9
MAN11-M150SS-BV125	11	86.9	22	29.0	735	18.5	8.4
MAN12-M150SS-BV125	12	94.8	24	30.9	785	19.5	8.9
<b>New</b> MAN13-M150SS-BV125	13	102.7	26	32.9	835	20.5	9.3
<b>New</b> MAN14-M150SS-BV125	14	110.6	28	34.9	885	21.6	9.8
<b>New</b> MAN15-M150SS-BV125	15	118.5	30	37	935	22.6	10.2

\* Caltherm Mega's body is offered in 1 ½ in. BV125 suffix means that it is connected to the system through a 1 ¼ in ball valve while suffix BV150 is connected to the system through a 1 ½ in ball valve.



#### TECHNICAL DATA

- Headers with 1 ¼ in or 1 ½ in connections
- Made of 304 stainless steel
- Preassembled on wall support for easy installation
- Integrated flowmeters (7.9 LPM / 2 GPM per loop)
- Maximum pressure: 125 PSI/ 862 kPa
- Maximum temperature: 230°F / 110°C
- Provided with air purger and drain
- Possibility to isolate each loop with isolating valve and balancing valve
- 2-way NPT ball valve with integrated thermometer
- Compatible with ethylene and propylene glycol up to a maximum of 50% concentration

#### COMPLETE THE CALTHERM MEGA WITH

**Electrothermic actuator 24V from Calefactio**  
See details on page 12.



**Manifold air pressure test kit**  
See details on page 12.



## Compression fittings

Our compression fittings are made of brass, for increased durability.

#### TECHNICAL DATA

- Material : Brass
- O-Ring : Buna-N
- Connection type : ¾" BSPP
- Maximum temperature : 200°F (93°C)
- Maximum pressure : 160 PSI (11 bar)

Model#	Weight	
	lb	kg
FC12	0.16	0.07
FC58	0.18	0.08
FC34	0.33	0.15



OUR FITTINGS ARE MADE WITH ACCORDING TO ASTM F1960 AND ASTM F877.

# Fittings and rings F1960

## Cold Expansion Rings F1960

The cold expansion ring is made of PEX-a just like our tubing Calpex-R to offer a permanent tight seal without welding. Our fittings are made with according to ANSI/NSF 14, ANSI/NSF 61, ASTM F1960 and CSA B137.5.

### TECHNICAL DATA

- Use with cold expansion crimp rings F1960
- Material: Crosslinked polyethylene (PEX-a)
- Maximum temperature: 200°F (93°C)

Model#	Connection	Weight	
		lb	g
CPR12	½"	0.006	2.7
CPR58	⅝"	0.010	4.5
CPR34	¾"	0.012	5.4
CPR1	1"	0.020	9.1
CPR114	1¼"	0.030	13.6
CPR112	1½"	0.040	18.1
CPR2	2"	0.133	60.3



## Cold Expansion Fittings F1960

### TECHNICAL DATA

- Material: Brass
- O-Ring: Buna-N
- Connection type: ¾" BSPP
- Maximum temperature: 200°F (93°C)
- Maximum pressure: 160 PSI (11 bar)

Model#	Weight	
	lb	kg
FF12	0.23	0.10
FF58	0.24	0.11
FF34	0.24	0.11



## Coupling and Elbow F1960 New

Calefactio's PPSU (polyphenylsulfone) F1960 fittings are known for their durability, resistance to chemicals, and high temperature tolerance, making them a reliable and cost effective choice for various plumbing applications.

### TECHNICAL DATA

- Material: PPSU (polyphenylsulfone)
- Maximum temperature (without pressure): 160°C (320°F)
- Maximum temperature operating under pressure: 99°C (210°F) à 10.3 bar (150 PSI)



### F1960 COUPLING

Model#	Connection	Weight	
		lb	kg
CPLG-050	PEX ½"	0.01	0.006
CPLG-075	PEX ¾"	0.02	0.009
CPLG-100	PEX 1"	0.03	0.014
CPLG-125	PEX 1¼"	0.06	0.027
CPLG-150	PEX 1½"	0.08	0.036
CPLG-200	PEX 2"	0.23	0.105

### F1960 ELBOW

Model#	Connection	Weight	
		lb	kg
ELB-050	PEX ½"	0.01	0.005
ELB-075	PEX ¾"	0.03	0.014
ELB-100	PEX 1"	0.05	0.023
ELB-125	PEX 1¼"	0.09	0.040
ELB-150	PEX 1½"	0.13	0.059
ELB-200	PEX 2"	0.38	0.172

### Standards

System certificate Nr.: C0611245-01



### Standards

System certificate Nr.: C0611245-01



EXCLUSIVE AT CALEFACTIO

## Elbows and Mounting Clips

Thanks to our rigid PVC elbows and our polyethylene mounting clips, you'll be organizing your tubing in no time, just like the pros.

### ADVANTAGES

- Allows for modular and directional elbow installation
- Offers great flexibility when aligning your pipes
- Quick and easy installation on nailing base
- For a professional look and feel
- Space saving
- No special tools required
- Can be used for residential or commercial projects

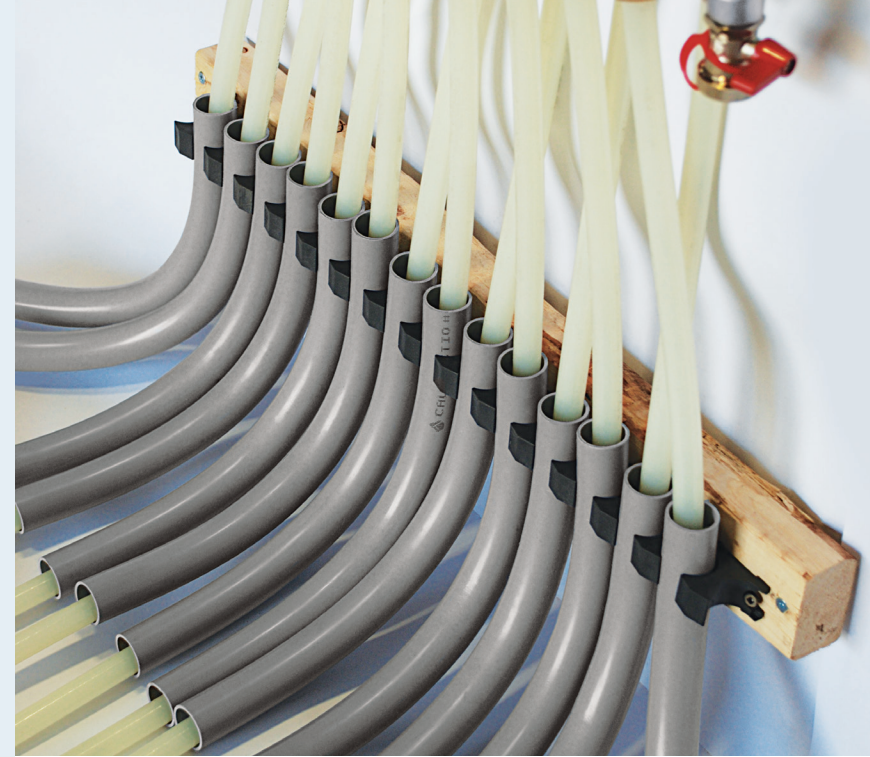
### Elbow

#### TECHNICAL DATA

- Made in PVC
- 1 elbow per package
- Use with PEX-a tubing 1/2" and 5/8"
- Can be installed with Calefactio's mounting clips (#CE-100CLIP)



Model#	Weight	
	lb	kg
CE-100 (1")	0.2	0.09



### Mounting Clips

Unlike the competition, Calefactio's mounting clips allow a modular installation and directional installation. In addition, 90° elbows prevent PEX-a tubing from bending and/or crack under the concrete floor.

#### TECHNICAL DATA

- Made in polyethylene
- Box of 15 clips, screws included (#8, 1 1/4")
- Can be installed with Calefactio's elbow (#CE-100)

Model#	Weight	
	lb	kg
CE-100CLIP	0.035	0.016





#CAL-PANNEL-PRO

# Preassembled manifold cabinets

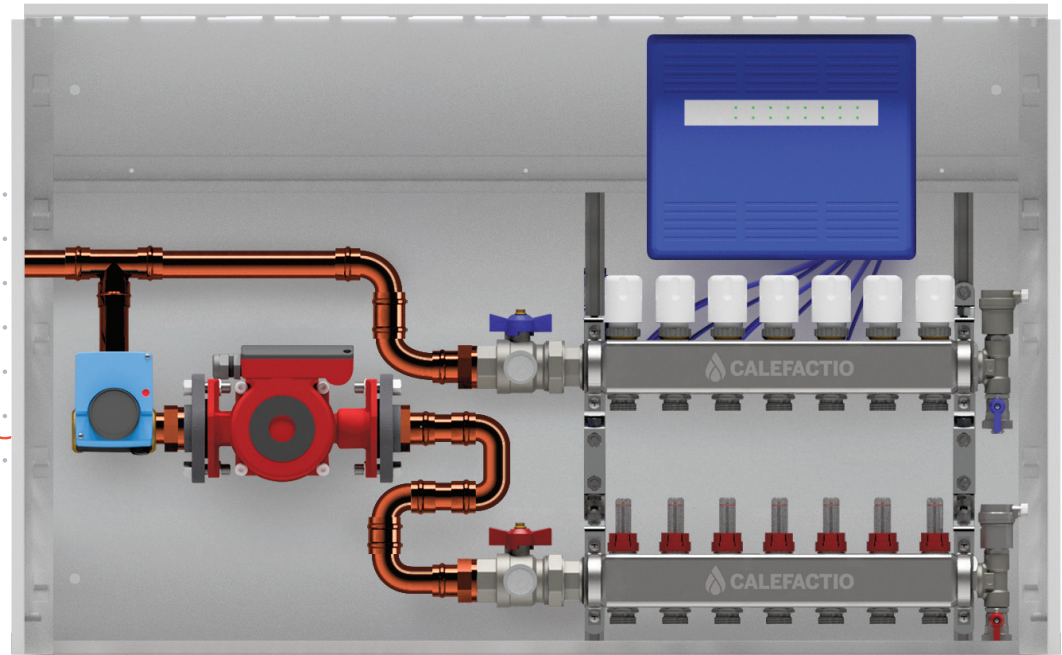
Calefactio's preassembled manifold cabinets are factory tested and allow different configurations.

## TECHNICAL DATA

- Designed for installation inside walls with a depth between 4" and 6".
- Depth-adjustable housing made of 18-gauge steel with a baked white enamel finish.
- Frame and door made of 18-gauge steel with a baked white enamel finish, except for model MWC52SS, which is made of stainless steel (SS304).
- Built-in lock for enhanced security.
- Included hardware: screws and safety nuts.

## FEATURES

- With or without pump
- With or without actuators
- With or without 3-way valve (0-10 volts or 24 volts floating)



COMPATIBLE WITH CALPEX-R

## Tube Uncoiler New

Calefactio's tube uncoiler aids the pipe to uncoil efficiently and effectively, allowing for the pipe to be laid by a single person whilst improving the installers working conditions, and reducing labour costs.

### ADVANTAGES

- Can be used with all types and sizes of underfloor heating pipes
- Can be used by a single person
- Time efficient
- Easy to use
- Improves the installer's working conditions
- Reduces labour costs

### TECHNICAL DATA

- Made of black painted steel
- Minimum inner diameter of a coil: 20 cm
- Maximum outer diameter of a coil: 130 cm

Model#	Weight	
	lb	kg
Uncoiler	29.7	13.5



COMPATIBLE WITH CALPEX-R

## Floor Heating Strip New

The floor heating strip is the most versatile and economical solution for the installation of radiant floor systems. The strips can be installed directly on the floor or below sub-flow. Its low thickness makes this product ideal for thin slabs on floor levels.

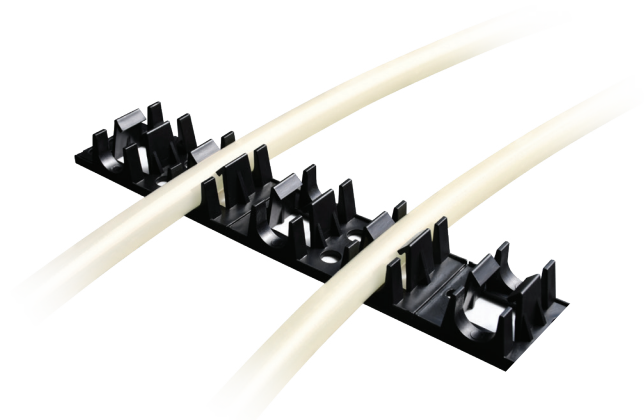
### INSTALLATION

They can be screwed or glued directly to the floor. The bars are joined thanks to special grooves. To ensure optimal maintenance of the PEX, it is recommended to maintain a spacing between 2 and 4 feet.

Model#	Length		Width		Height		Weight	
	in	mm	in	mm	in	mm	in	kg
FSH12	39.37	1000	1.77	45	1	24	0.55	0.25

### TECHNICAL DATA

- 20 strips per inner box
- Strip length: 39.37 in (1 meter)
- Made in plastic
- For 1/2" and 5/8" PEX tubing



COMPATIBLE WITH CALEFACTIO MANIFOLDS

## Electrothermic Actuator 24V

When there are multiple thermostats connected to one manifold, then it's essential to use actuators to control the distribution flow in the loops according to the thermostat demands. With this, you will be able to manage the temperature of each zone independently.

### TECHNICAL DATA

- **Type of movement:** linear movement
- **Maximum actuator stroke:** 3.5 mm
- **Working stroke on valve:** 2.5 mm
- **Rated voltage:** 24 V (+10% / -15%)
- **Frequency:** 60 Hz
- **Power consumption:** 2.0 W-24 V (continuous duty)
- **Version:** NC (normally closed), 2-wire
- **Time to open/close:** ~ 90-120 seconds
- **Protection degree:** IP54 according to EN 60529
- **Electrical protection class:** Class II
- **Connecting cable:** length 1 m 2 × 2.0 mm<sup>2</sup>
- **Ambient temperature range:** 0°C up to 50°C during use
- **Storage temperature range:** -25°C up to 60°C
- **Mechanical connection:** threaded ring nut M30 × 1.5



Model#	Connection	Weight	
		lb	kg
AC24NC	¾" × ½"	0.44	0.2

## Cabinet

Model#	Height		Width		Depth	Weight	
	in	mm	in	mm		lb	kg
MWC24	25¼	640	24	600	4¾ to 6 in 110 to 150 mm	23.4	10.6
MWC32	25¼	640	32	800		30.0	13.6
MWC40	25¼	640	40	1000		35.3	16.0
MWC52SS*	25¼	640	52	1320		43.4	19.7



## Accessories

### Pression Differential By-Pass Valve

Model#	Description	Weight	
		lb	kg
PDBV075N	¾" NPT, adjustable pressure	0.8	0.36
PDBV100	1", fixed pressure	1.4	0.7



### Union

Model#	Description	Weight	
		lb	kg
CM150	Coupling manifold	0.38	0.17



### Repair Fitting

Model#	Description	Weight	
		lb	kg
CG075	G ¾" Connection	0.11	0.049



### Plug

Model#	Description	Weight	
		lb	kg
PLUG-G075	G ¾" Connection	0.08	0.04



### Manifold Air Pressure Test Kit

Model#	Description	Weight	
		lb	kg
MAN-APTK	G 1" Connection	0.7	0.32



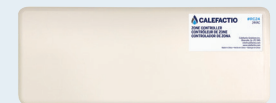
### PEX Cutter

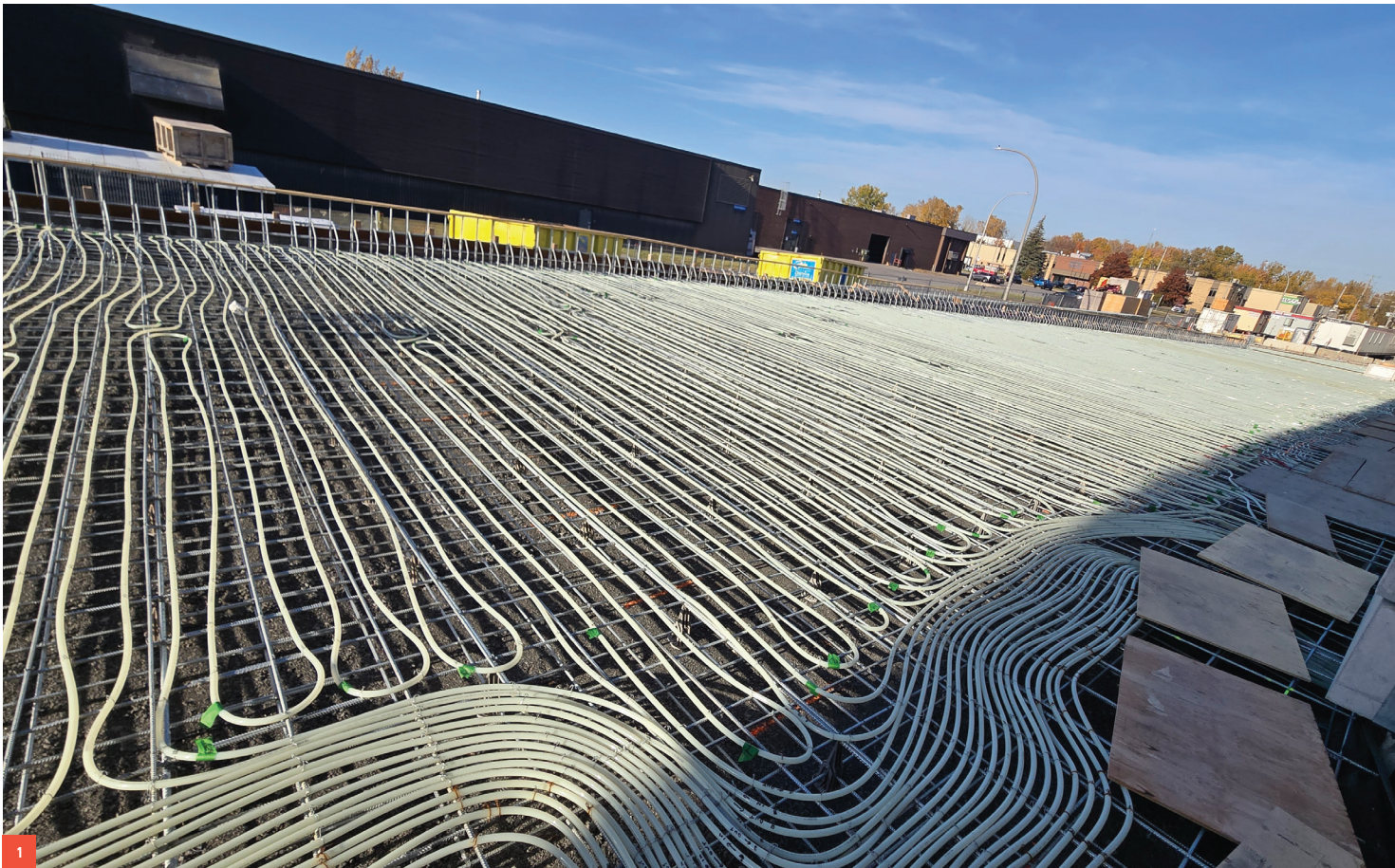
Model#	Description	Weight	
		lb	kg
CUTTER	For PEX tubing until 1"	0.4	0.2



### Zone Controller

Model#	Description	Weight	
		lb	kg
CTR-24V	24V	1.6	0.58





1

## Our work

**1. Société de transport de Laval (STL)**  
Snow melting: 16,000 ft<sup>2</sup>  
3 million BTUs  
18 preassembled manifold cabinets  
35,000 feet of Calpex tubing

**2. IGA / Housing tower**  
Snow melting: 25,000 ft<sup>2</sup>  
6 million BTUs  
16 Caltherm manifolds  
500,000 feet of Calpex tubing

**3. Square Philips**  
Snow melting: 24,000 ft<sup>2</sup>  
4 million BTUs  
23 Caltherm manifolds  
52,000 feet of Calpex tubing



2



3

Have a project in mind?  
Scan the QR code to submit your  
design request now.



Quebec, Canada

**T** (450) 951-0818

**F** (450) 951-2165

**CALEFACTIO RADIANT.COM**

